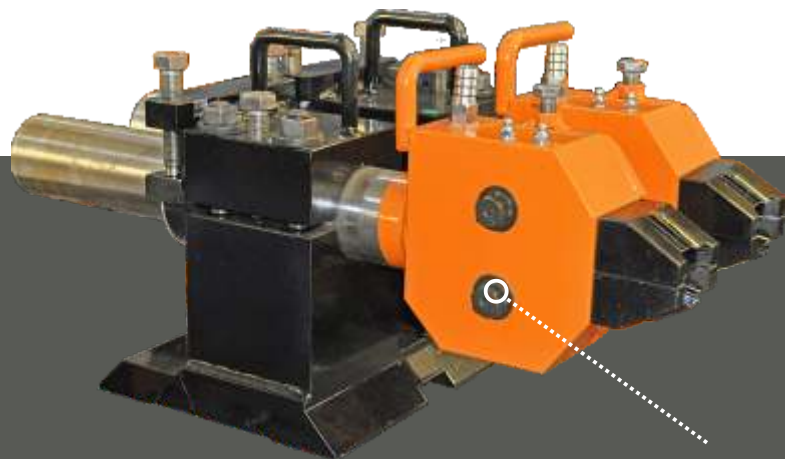
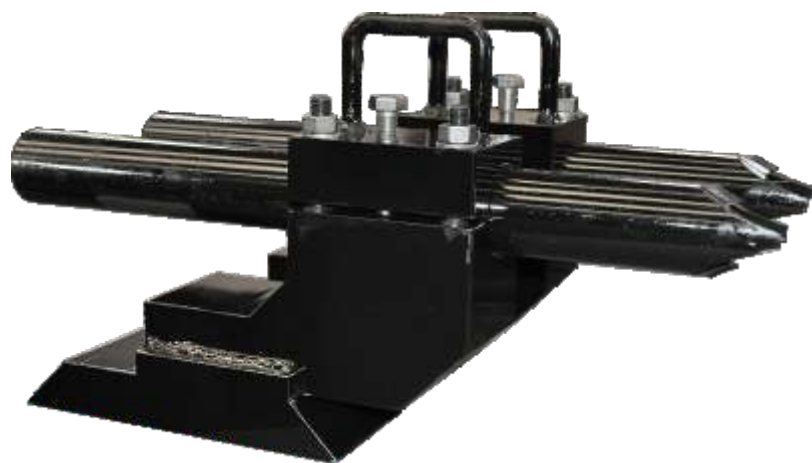
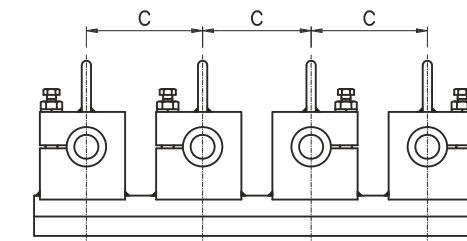
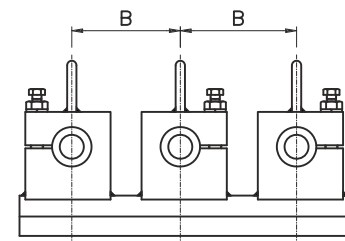
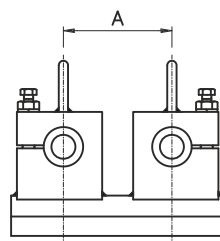
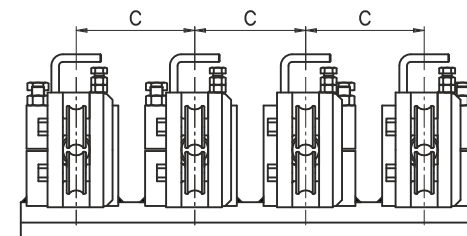
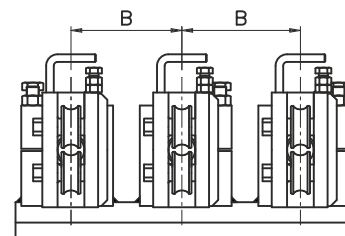
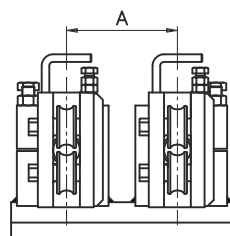


Guide doppie/triple/quadruple in uscita

Double/triple/quadruple/ exit guides



Trattamento termico dei rulli
Heat treatment of rollers



| TYPE | A MIN | B MIN | C MIN |
|---------|----------|----------|----------|
| DLT 260 | 80 | 80 | 80 |
| DLT 320 | 100 | 100 | 100 |

| TYPE | A MIN | B MIN | C MIN |
|--------|----------|----------|----------|
| CTR 16 | 135 | 135 | 135 |
| CTR25 | 150 | 150 | 150 |